



# February News

The Official Newsletter of Rucstall Primary School

Dear Parents/Carers,

As February draws to a close, I want to take a moment to reflect on what has been another wonderfully productive month at school. Although the weather has continued to be wet and unpredictable, the smiles on our children's faces and their positive attitudes towards learning have brightened every day. Their enthusiasm and resilience continue to make us incredibly proud.



This half term, I am thrilled to introduce our new member of staff, Mr Briggs, who will be working in Rowan class during the mornings and supporting various children in the afternoons. Please join me in welcoming him to our school community.

Looking ahead, we have lots planned for this half term. Be sure to check out the upcoming events section for all the exciting activities we have in store. We have high expectations for all our children because we know they are capable of achieving great things. This month, we have placed particular focus on our school values, especially caring for our environment and looking after our belongings. Encouraging children to take responsibility for their surroundings not only supports a positive learning environment but also helps them develop independence and pride in what they do. When children hold high expectations of themselves, they set the foundation for future success.

I am delighted to share that once the children continue to show that they can take care of their environment, such as by putting resources and equipment away properly, we have invested in a range of new playground equipment. These additions are designed to make playtimes even more enjoyable and to ensure that our pupils remain active, engaged and happy throughout the day. We kindly ask for your support at home by encouraging your child to be independent with tidying up and looking after their belongings. Working together, we can help them build strong habits that will benefit them for years to come.

Finally, a big thank you to those parents who have volunteered their time to support us at lunchtimes. Your help is truly appreciated. If you would like to offer assistance at any point during the school day or week, please get in touch. We would love to hear from you.

Warmest Regards

Rachel Hughlock  
Headteacher

## REMINDERS

Please do read these newsletters to keep up to speed with news from the school. A few reminders are included below, as well as our Diary Dates for the upcoming term. The website also contains all dates, which you can link to your own electronic calendars also.

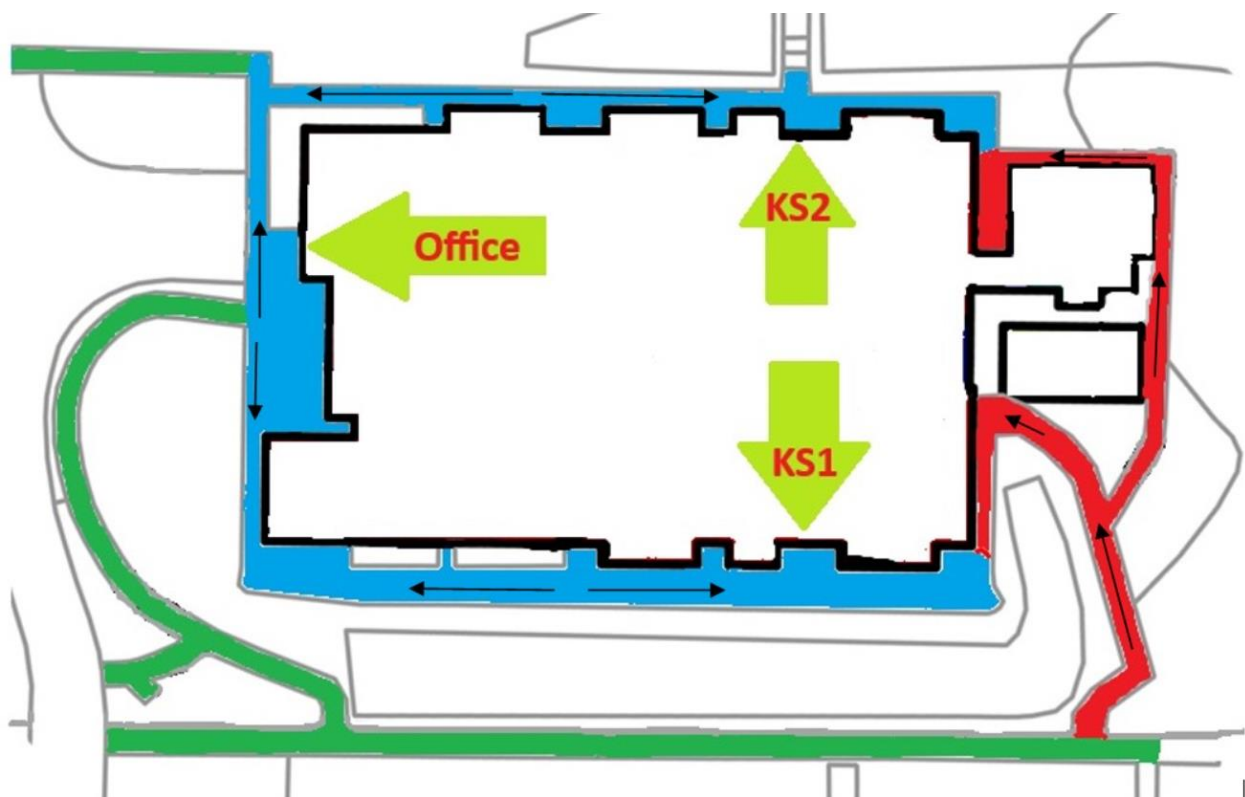
Nuts: Please could you ensure that you do not send your child into school with ANY nuts. This includes pistachio, pinenuts, almonds, cashew, walnuts, brazil and pecan nuts. We have children in school with **severe nut allergies** so we must ensure our school is completely nut free. Thank you for being vigilant in helping to safeguard our children.



Labels: As we reach the halfway point of the year, please remember to label everything - names are starting to rub off jumpers.

School Library: Just a friendly reminder that the Key Stage One Library is open for parents on Mondays and Fridays from 3:20 to 3:40 please come and go from the library, this is the door before the cloakroom door.

Drop off: We operate a one-way system for dropping off your children in the morning. This helps to keep everyone moving and ensures the children can get to their classrooms in a timely fashion. We appreciate that some parents are dropping off at both KS1 and KS2 and therefore two way traffic is necessary, but as you are aware narrow pathways around the school do create pinchpoints. Therefore we ask that the red areas on the map are one way only to avoid congestion and hazards.



## RECENT EVENTS

We were all very proud of the fantastic cooking achievements in Year 3/4, cooking Hamantaschen in RE.



Our catering team made Valentine's Day special with delightful themed meals that everyone loved.



## CAR PARK – KEEPING EVERYONE SAFE!

### **Community Safety Update**

*Hello, I'm Daria, a Community Safety Patrol Officer for Basingstoke and Deane Borough Council covering an area which includes Rucstall Primary School.*

*We've received increased complaints about unsafe parking and antisocial behaviour at drop-off and pick-up times. While we understand everyone is busy, these issues can pose risks to the children as well as inconvenience to the wider community.*

*To help, I'll continue patrolling the area before and after school to encourage safe, considerate parking. Please remember that Rucstall Community Hall car park is available for parents to use, please park considerately in the marked bays and avoid parking on the green space outside the centre.*

*Please park safely and responsibly to keep pupils and families walking to and from the school safe and avoid the need for fixed penalty notices.*

#### UPCOMING TRIPS

Weald and Downland Museum Year 4 -11/3/25

#### UPCOMING EVENTS

Thursday 5<sup>th</sup> March – World Book Day – A letter with more details was sent out on the 13<sup>th</sup> February.

Thursday 5<sup>th</sup> and Friday 6<sup>th</sup> March – First aid workshops for the children. Please join us after school on Thursday 5<sup>th</sup> March for our parents' workshop.

Tuesday 17<sup>th</sup> March – Rocksteady Concert at 2.30pm, for the families of children who take part.

Friday 20<sup>th</sup> March – Comic Relief. A letter with more details to follow. – children can wear non uniform in return for a donation.

Tuesday 24<sup>th</sup> March – Non uniform day in return for an Easter Egg

Thursday 26<sup>th</sup> March – Easter Egg Hunt during the school day followed by the PTFA Easter Fayre.

#### ATTENDANCE UPDATE

The total attendance across the school for January was 95.62%. Well done to Rowan class for the highest attendance of 97.72%.

# Attendance Matters

Good attendance means being in school at least 96% of the time.

We are in school for 190 days of the year.

## Punctuality Matters



## Absence matters



### STAYING ORGANISED

#### Communicating with the school.

Please direct messages and enquiries to our office team, they will ensure your communication finds the correct person and who will action. **For any absence, please call the school office rather than send in an email.**

Please be mindful that all our staff have additional duties and commitments, they are therefore not available for immediate communication. Allow 5 working days for a response.

School office opening hours – Term Time - Monday to Friday - 8.30am to 4pm.

Email: [adminoffice@rucstall.hants.sch.uk](mailto:adminoffice@rucstall.hants.sch.uk) Tel: 01256 466524

Alternatively, to relay short face-to-face messages to the class teacher, this can be done when collecting your child at the classroom door at the end of the school day.

#### Medication and Forms

Each academic year we are required to have a new medical form, for each medication we are required to administer (this includes Inhalers).

- We have emailed instructions to all parents of pupils with known medications. Please check and action this email.
  - Any pupils no-longer requiring medication, please let the office staff know.
- Any new medical concerns must be brought to the office team's attention directly.

**It is parents' responsibility to ensure the medical information held at school for your child is correct and up to date.**

Children will NOT be able to take part in any off-site activities without the correct medications and up to date forms.

### Everything Looks the Same as Everyone Else's!

Pupils from Year R all the way up to Year 6 lose multiple items every day. We will always help pupils look for lost items, it really does make that job a lot easier if the item is named. Please ensure your child has their name on everything that belongs to them. Un-named items tend to get lost forever.

### P.E Kits

P.E kits need to be in all week so that the pupils have access to them at all times. P.E lessons may need to be moved last minute or kit maybe used for other lessons.

### School Dinners

Pupils in KS2 (year 3 and above) unless they are intitled to free school meals, need to pay for their school lunches. School lunches are £3 a lunch. Funds are paid into the class account, in advance of any school dinners required for the week, as the school cannot allow debt to accrue.

### Finding Information

All information is sent to you via ParentMail any letters sent out are also uploaded on to the website under the Parent tab. Diary dates can be found on the website on the calendar tab and are sent out with details on the newsletters. Before contacting the office, please check ParentMail and the website.

### Calendar

We have the school calendar on the school's website to ensure you always have easy access to the diary dates. You can also subscribe to this calendar right there on the website and it will sync with your own diary, keeping you up to date with all your child's events and activities.

## Diary Dates

| Date                             | Event   |
|----------------------------------|---|
| Wednesday 4 <sup>th</sup> March  | Wellbeing Wednesday                                     |
| Thursday 5 <sup>th</sup> March   | World Book Day  |
|                                  | First aid workshop for children (during the school day) |
|                                  | Parents first aid workshop                              |
| Friday 6 <sup>th</sup> March     | First aid workshop for children (during the school day) |
| Monday 9 <sup>th</sup> March     | Year R height, weight and vision                        |
| Wednesday 11 <sup>th</sup> March | Year 4 trip to Weald and Downland Museum                |
| Tuesday 17 <sup>th</sup> March   | Rocksteady Concert at 2:30pm                            |
|                                  | On line safety meeting 5pm                              |

|                                  |   |
|----------------------------------|---|
| Wednesday 18 <sup>th</sup> March | Open the book assembly                      |
| Friday 20 <sup>th</sup> March    | Comic Relief                                |
| Tuesday 24 <sup>th</sup> March   | Non-uniform day in return for an Easter Egg |
| Wednesday 25 <sup>th</sup> March | Parent Showcase                             |
| Thursday 26 <sup>th</sup> March  | Easter Egg Hunt during the school day       |
|                                  | PTFA Easter Fayre                           |
| Friday 27 <sup>th</sup> March    | INSET Day 5                                 |