



## What is Mental Health?

<https://youtu.be/DxIDKZHW3-E>  
<https://youtu.be/nCrjevx3-Js>  
<https://youtu.be/lhv1h3V8Nz4>  
<https://youtu.be/dOkyKyVFnsS>

## Where can I go for more information or support?

- School 01256 466524
- GP
- CAMHS <https://hampshirecamhs.nhs.uk/> The Hampshire Specialist CAMHS Single Point of Access (SPA) – Tel: 0300 304 0050



What is Autism?

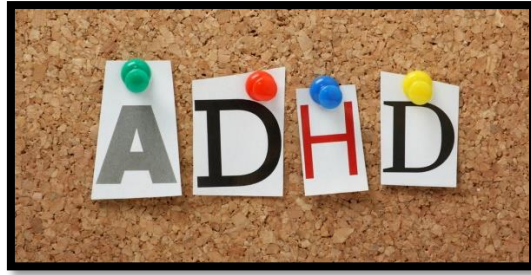
[https://youtu.be/cn\\_LtI9uFkM](https://youtu.be/cn_LtI9uFkM)

<https://youtu.be/RbwRrVw-CRo>

<https://youtu.be/dKCdV20zLMs>

Where can I go for more information or support?

- School 01256 466524
- GP
- CAMHS <https://hampshirecamhs.nhs.uk/>The Hampshire Specialist CAMHS Single Point of Access (SPA) – Tel: 0300 304 0050
- Family Support Service [basingstoke.earlyhelp@hants.gov.uk](mailto:basingstoke.earlyhelp@hants.gov.uk)tel: 01256 776189



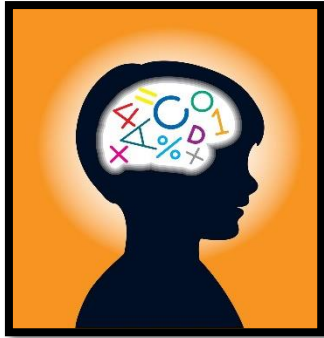
What is ADHD?

<https://youtu.be/suEjXwnxaYY>

<https://youtu.be/NL483G4xKu0>

Where can I go for more information or support?

- School 01256 466524
- GP
- CAMHS <https://hampshirecamhs.nhs.uk/>The Hampshire Specialist CAMHS Single Point of Access (SPA) – Tel: 0300 304 0050
- Family Support Service [basingstoke.earlyhelp@hants.gov.uk](mailto:basingstoke.earlyhelp@hants.gov.uk) 01256 776189



## What is dyslexia?

The BDA has adopted the Rose (2009) definition of dyslexia:

Dyslexia is a learning difficulty that primarily affects the skills involved in accurate and fluent word reading and spelling. Characteristic features of dyslexia are difficulties in phonological awareness, verbal memory and verbal processing speed. Dyslexia occurs across the range of intellectual abilities. It is best thought of as a continuum, not a distinct category, and there are no clear cut-off points. Co-occurring difficulties may be seen in aspects of language, motor co-ordination, mental calculation, concentration and personal organisation, but these are not, by themselves, markers of dyslexia. A good indication of the severity and persistence of dyslexic difficulties can be gained by examining how the individual responds or has responded to well-founded intervention.

In addition to these characteristics:

The British Dyslexia Association (BDA) acknowledges the visual and auditory processing difficulties that some individuals with dyslexia can experience, and points out that dyslexic readers can show a combination of abilities and difficulties that affect the learning process. Some also have strengths in other areas, such as design, problem solving, creative skills, interactive skills and oral skills.

BDA (2010)

<https://youtu.be/11r7CFIK2sc>

<https://youtu.be/RDFkwwSgjtq>

[https://youtu.be/sLWBqz\\_GrRQ](https://youtu.be/sLWBqz_GrRQ)

Where can I go for more information or support?

- School 01256 466524
- The Dyslexia Association
- <https://www.dyslexia.uk.net/what-is-dyslexia/>
- British Dyslexic Association <https://www.bdadyslexia.org.uk/>

- Facebook support group for parents with dyslexic children  
<https://www.facebook.com/groups/dyslexiasupportforparents>
- Empowering parents' booklet:  
<https://cdn.bdadyslexia.org.uk/documents/Empowered-Parents.pdf?mtime=20200324144644>

### What is Dyscalculia?

<https://youtu.be/GRJS-jeZ7ls>  
<https://youtu.be/IFoKyHxi3bM>  
[https://youtu.be/\\_djdPIZrFno](https://youtu.be/_djdPIZrFno)

### Where can I go for more information or support?

- School 01256 466524
- <https://www.dyslexia.uk.net/specific-learning-difficulties/dyscalculia/>
- The dyscalculia information centre: <https://www.dyscalculia.me.uk/>
- The dyscalculia Facebook support page UK:  
<https://www.facebook.com/groups/dyscalculia>